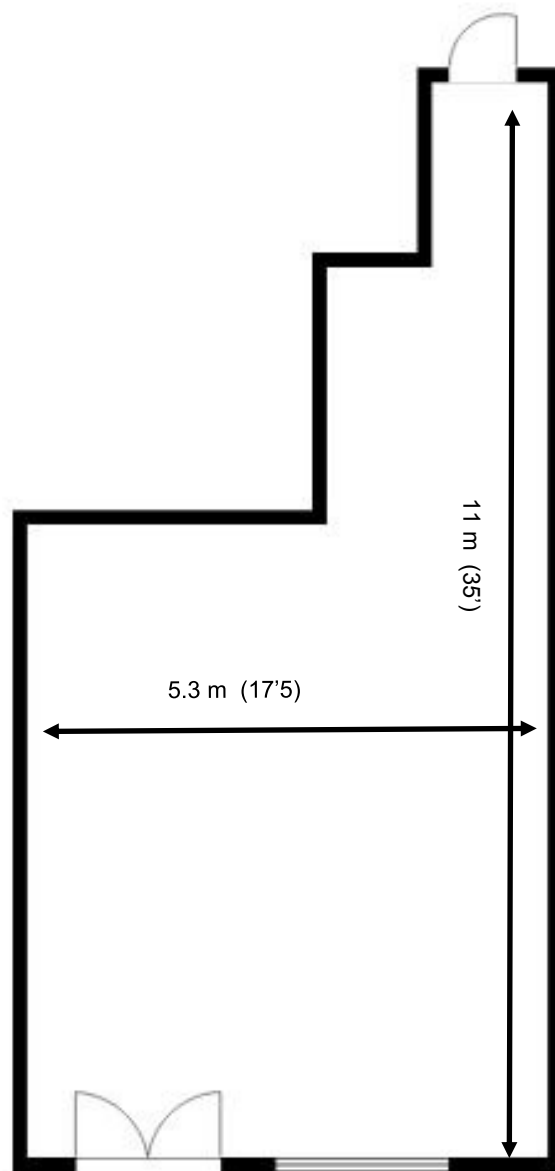


Waterhouse Business Centre



Ground Floor - Unit 12a
42.1 sq m (453 sq ft)*



Waterhouse Business Centre
Cromar Way
Chelmsford
Essex CM1 2QE
01245 392000

*Approximate Measurements
Not to scale

Space for growing businesses

www.capitalspace.co.uk

Waterhouse Business Centre



First Floor—Unit 72
36.3 sq m (391 sq ft)*



Additional Information

We are happy to provide further details and answer any questions.
Please contact our Centre Manager on 01245 392000.

Waterhouse Business Centre
Cromar Way
Chelmsford
Essex CM1 2QE
01245 392000

*Approximate Measurements
Not to scale

Space for growing businesses

www.capitalspace.co.uk