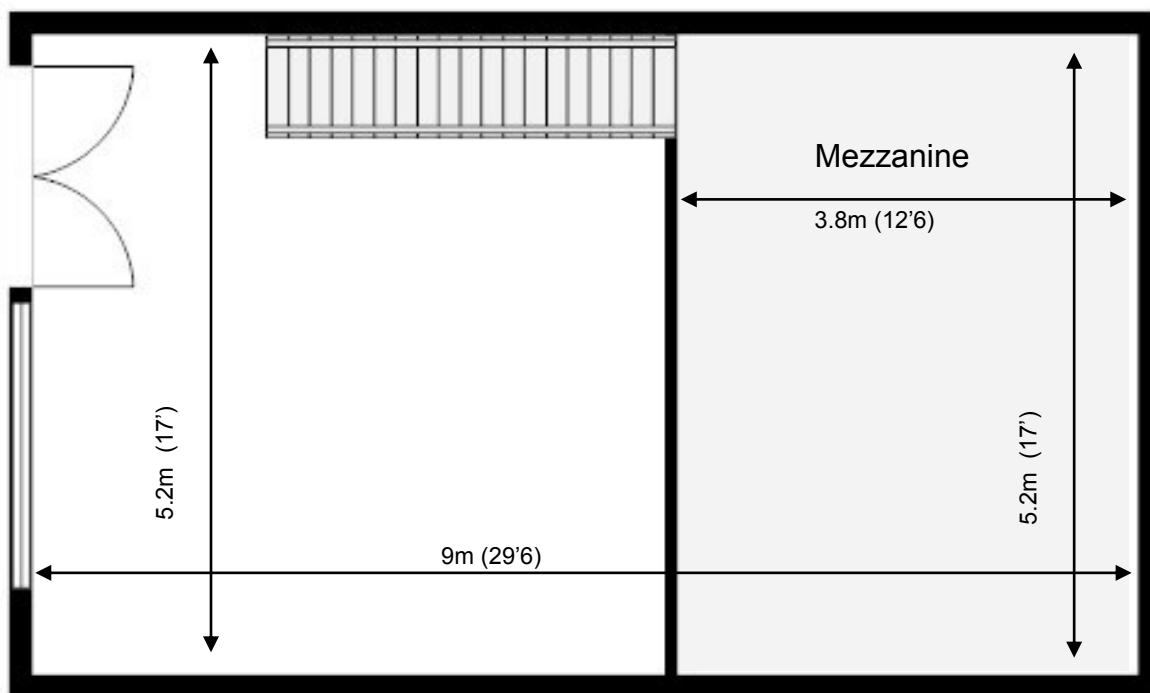


Waterhouse Business Centre



Unit 202

47 sq m (506 sq ft)*



Waterhouse Business Centre

Cromar Way
Chelmsford
Essex CM1 2QE
01245 392000

*Approximate Measurements

Not to scale

Space for growing businesses

www.capitalspace.co.uk

Waterhouse Business Centre



Unit 202

47 sq m (506 sq ft)*



Additional Information

Concrete floor.

We are happy to provide further details and answer any questions.
Please contact our Centre Manager on 01245 392000.

Waterhouse Business Centre

Cromar Way
Chelmsford
Essex CM1 2QE
01245 392000

*Approximate Measurements

Not to scale

Space for growing businesses

www.capitalspace.co.uk