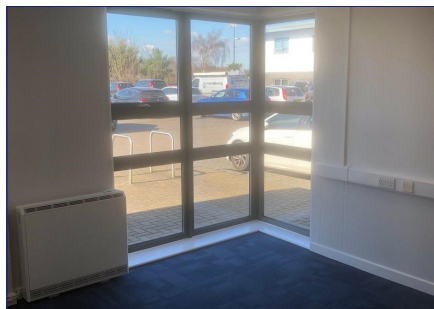
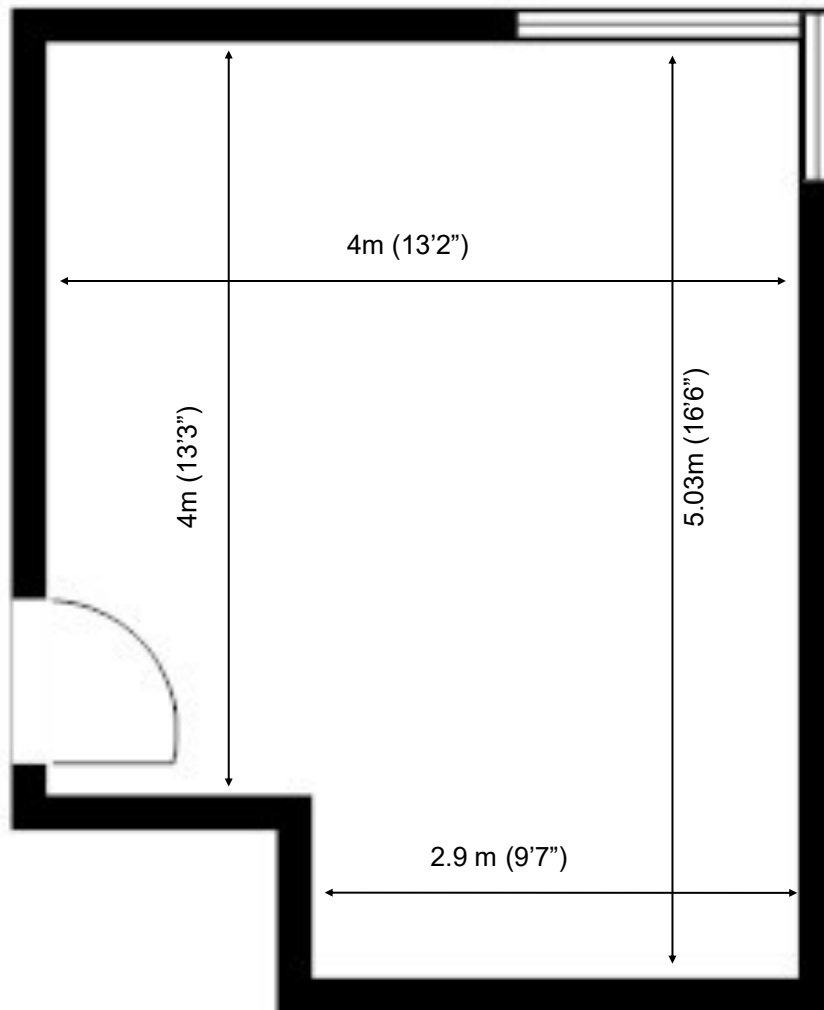


Capital Business Centre

Ground Floor—Unit 12A
19.5 sq m (210 sq ft)*



Capital Business Centre
22 Carlton Road
South Croydon
Surrey CR2 0BS

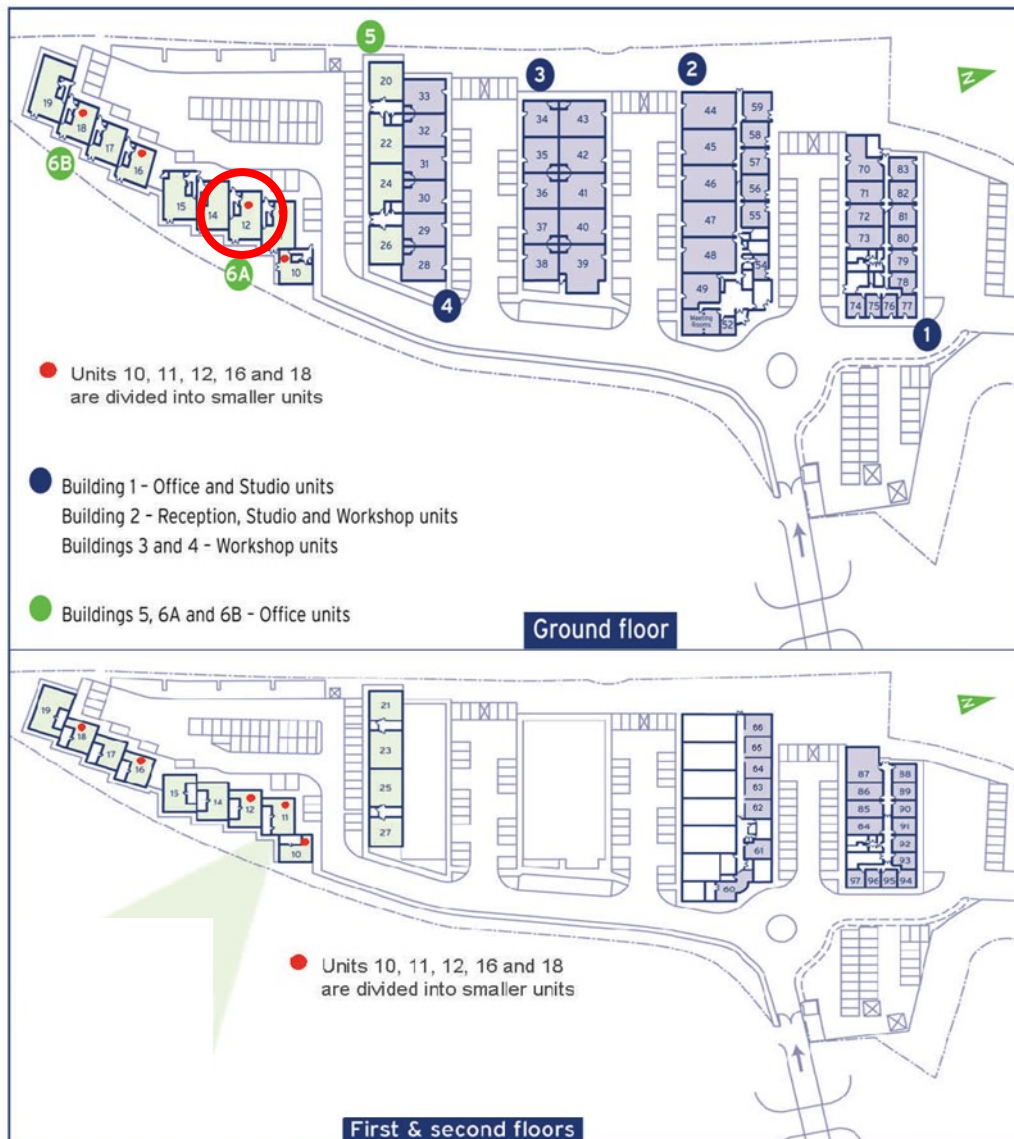
*Approximate Measurements
Not to scale

Space for growing businesses

www.capitalspace.co.uk

Capital Business Centre

Ground Floor—Unit 12A
19.5 sq m (210 sq ft)*



Additional Information

We are happy to provide further details and answer any questions.
Please contact our Centre Manager on 020 8916 2000.

Capital Business Centre
22 Carlton Road
South Croydon
Surrey CR2 0BS

*Approximate Measurements

Not to scale

Space for growing businesses

www.capitalspace.co.uk