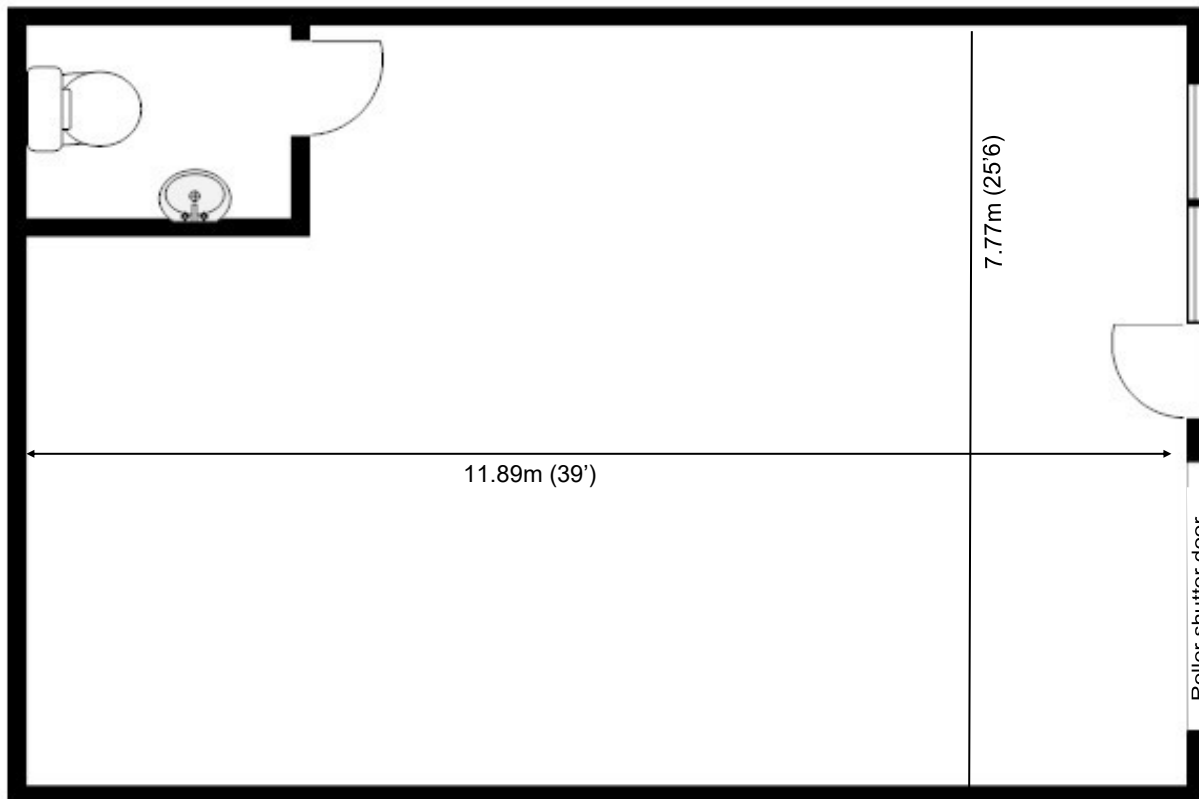
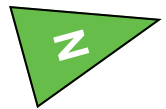


# Capital Business Centre

Ground Floor—Unit 41  
92.5 m ( 996 sq ft)\*



**Capital Business Centre**  
22 Carlton Road  
South Croydon  
Surrey CR2 0BS

\*Approximate Measurements  
Not to scale

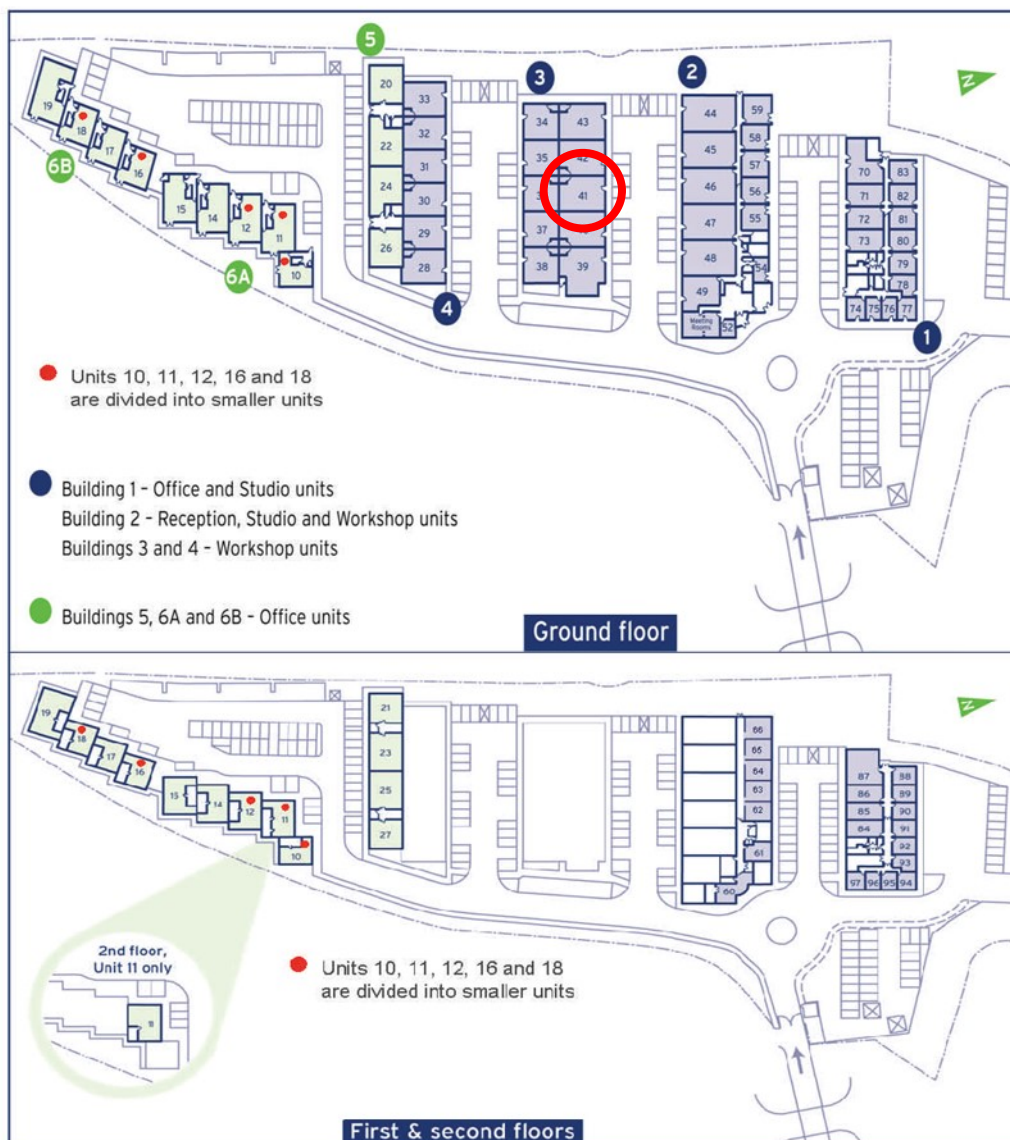
Space for growing businesses

[www.capitalspace.co.uk](http://www.capitalspace.co.uk)

# Capital Business Centre

## Ground Floor—Unit 41

92.5 m ( 996 sq ft)\*



### Additional Information

Own entrance, own toilet. Roller shutter door.

We are happy to provide further details and answer any questions.  
Please contact our Centre Manager on 020 8916 2000.

**Capital Business Centre**  
22 Carlton Road  
South Croydon  
Surrey CR2 0BS

\*Approximate Measurements

Not to scale

Space for growing businesses

[www.capitalspace.co.uk](http://www.capitalspace.co.uk)