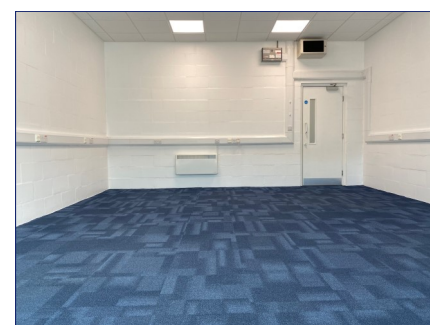
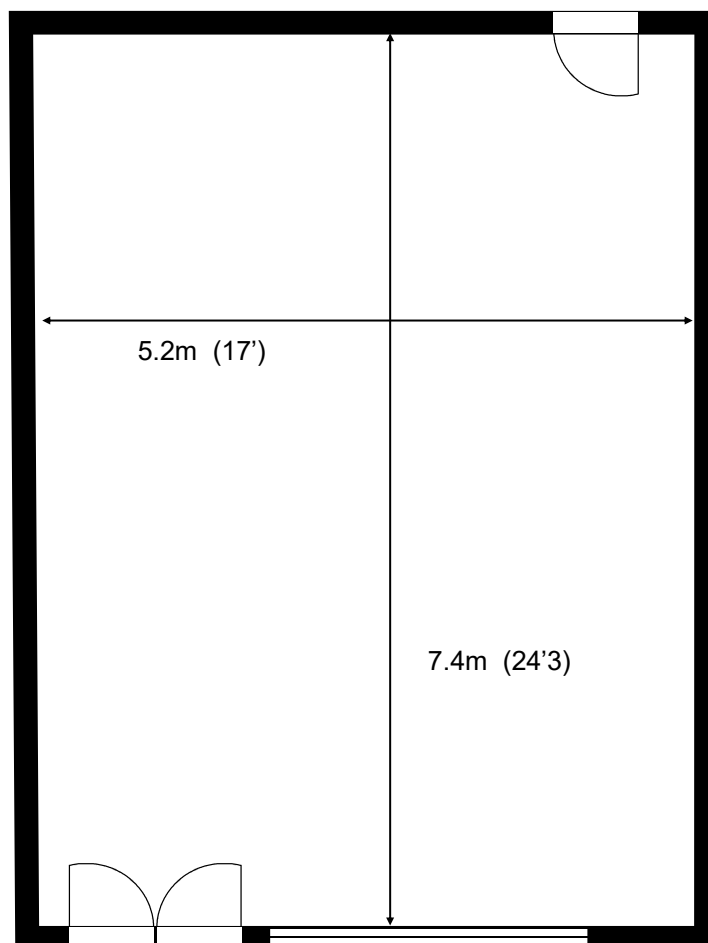


Waterhouse Business Centre

Unit 18

38.2 sq m (411 sq ft)*



Waterhouse Business Centre
Cromar Way
Chelmsford
Essex CM1 2QE

*Approximate Measurements
Not to scale

Space for growing businesses

www.capitalspace.co.uk

Waterhouse Business Centre



Unit 18

38.2 sq m (411 sq ft)*



Additional Information

We are happy to provide further details and answer any questions. Please contact our Centre Manager on 01245 392000.

Waterhouse Business Centre
Cromar Way
Chelmsford
Essex CM1 2QE

*Approximate Measurements
Not to scale