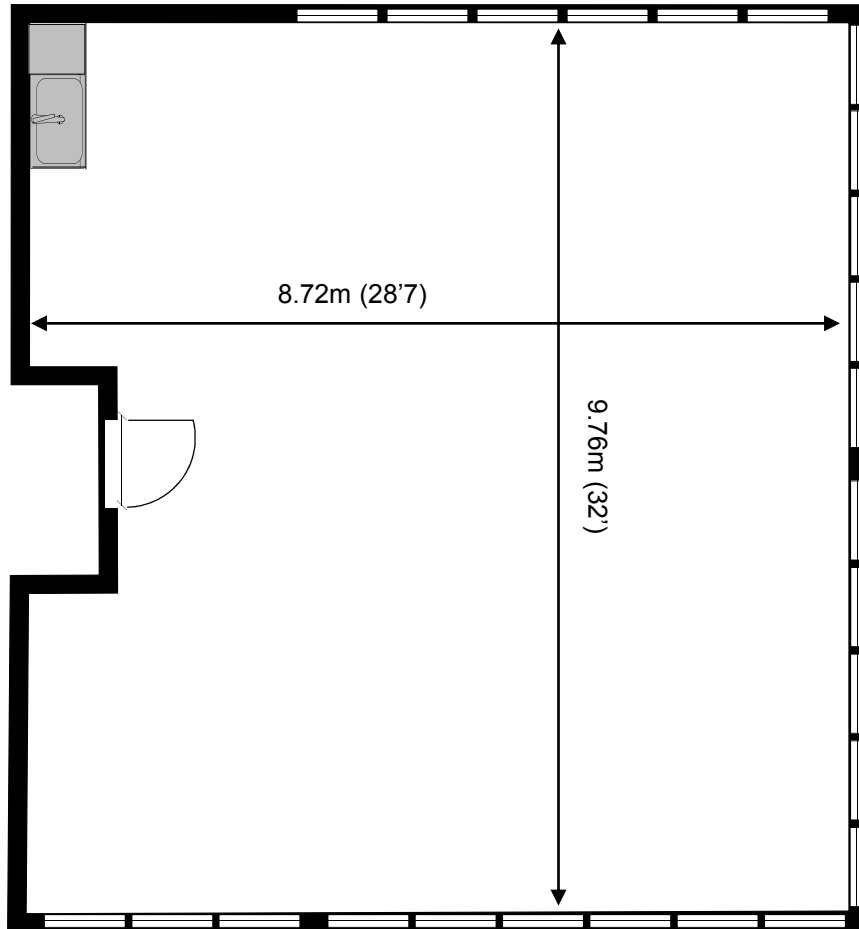


# St George's Business Park

First Floor—Unit C15

82.7 sq m (887 sq ft)\*



**St George's Business Park**  
Castle Road  
Sittingbourne  
Kent ME10 3TB

\*Approximate Measurements

Not to scale

Space for growing businesses

[www.capitalspace.co.uk](http://www.capitalspace.co.uk)

# St George's Business Park

## First Floor—Unit C15

82.7 sq m (887 sq ft)\*



### Additional Information

First floor of main building with manned reception.

Wall of waist-high windows fitted with venetian blinds to three sides of the office.

Kitchenette area to rear.

**St George's Business Park**  
Castle Road  
Sittingbourne  
Kent ME10 3TB

\*Approximate Measurements

Not to scale