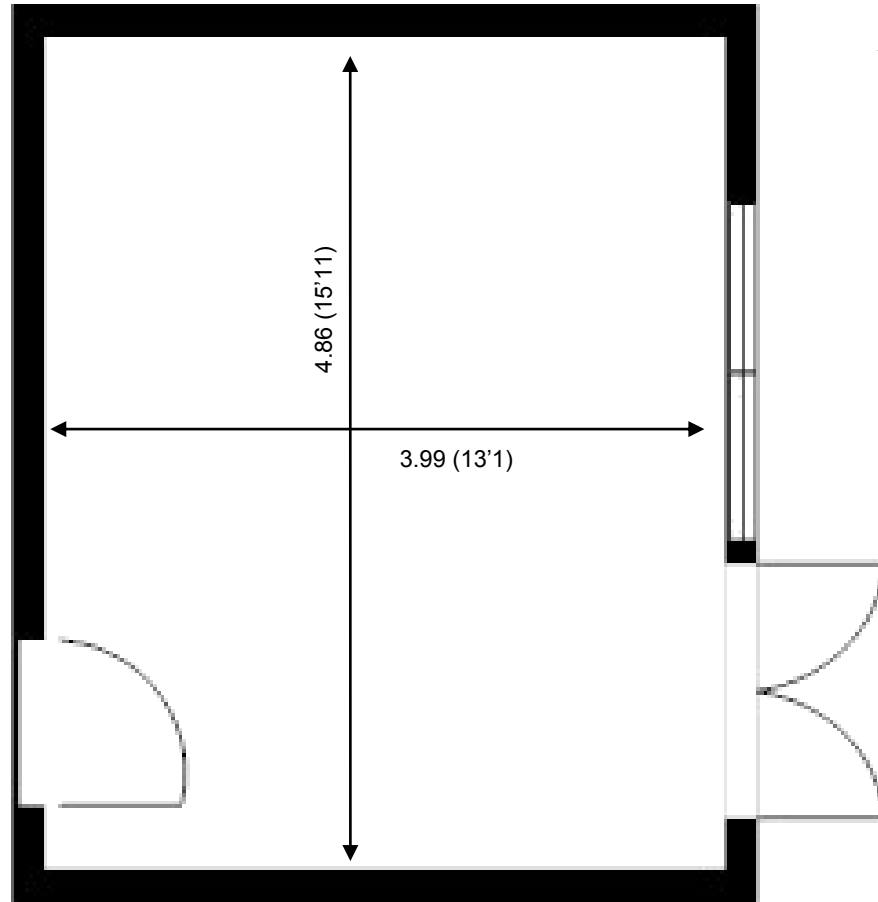


# St George's Business Park

Ground Floor—Unit C3

19.4 sq m (209 sq ft)\*



**St George's Business Park**  
Castle Road  
Sittingbourne  
Kent ME10 3TB

\*Approximate Measurements

Not to scale

Space for growing businesses

[www.capitalspace.co.uk](http://www.capitalspace.co.uk)

# St George's Business Park

## Ground Floor—Unit C3

19.4 sq m (209 sq ft)\*



### Additional Information

We are happy to provide further details and answer any questions. Please contact our Centre Manager on 01795 432605.

**St George's Business Park**  
Castle Road  
Sittingbourne  
Kent ME10 3TB

\*Approximate Measurements

Not to scale